



90+ Years of Managing Trails

April 24, 2011

Presented to Board of Directors

by

Jane Daniels, Director

So that People can Hike:

- In 2010 about 1,000 volunteers maintaining 1750+ miles of trails worked
 - 35,418 hours in the field
 - 11,396 hours traveling to work site
 - 6,164 hours doing administrative tasks
- * And that does not include staff or off-trail volunteer time to support them!

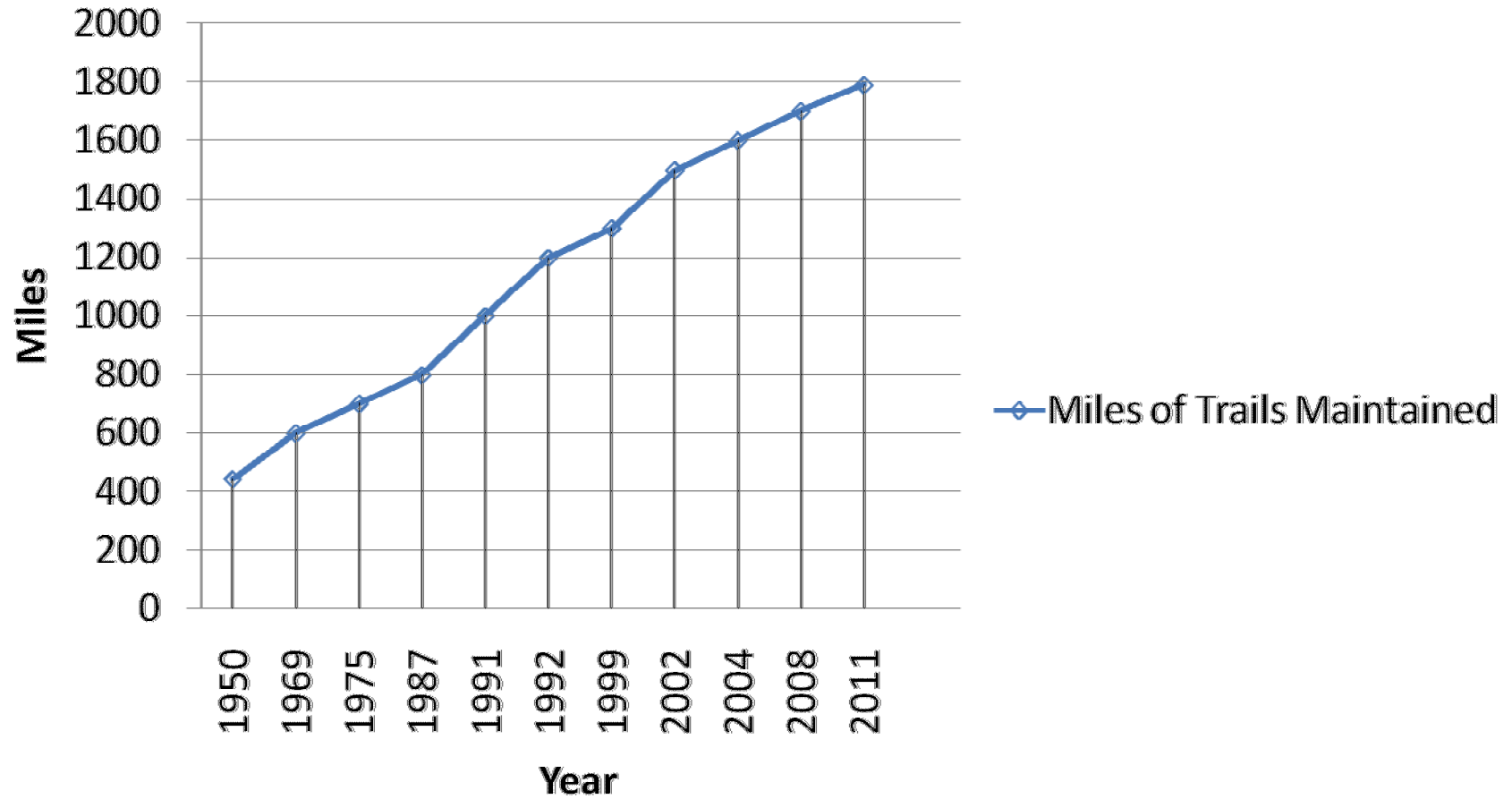
It is possible because of our

- History – 90 Years
- Structure – Volunteers managing volunteers
- Support – Staff and additional volunteers
- Partnerships – State, county, municipal and non profits

Major Developments

- 1984 - Trails Council
- 1984 – First maintenance training workshop
- 1985 - Staff support for Trails
- 1994 - Trails Policy
- 2000 - Trail Management Guide
- 2008 - Regional staff support

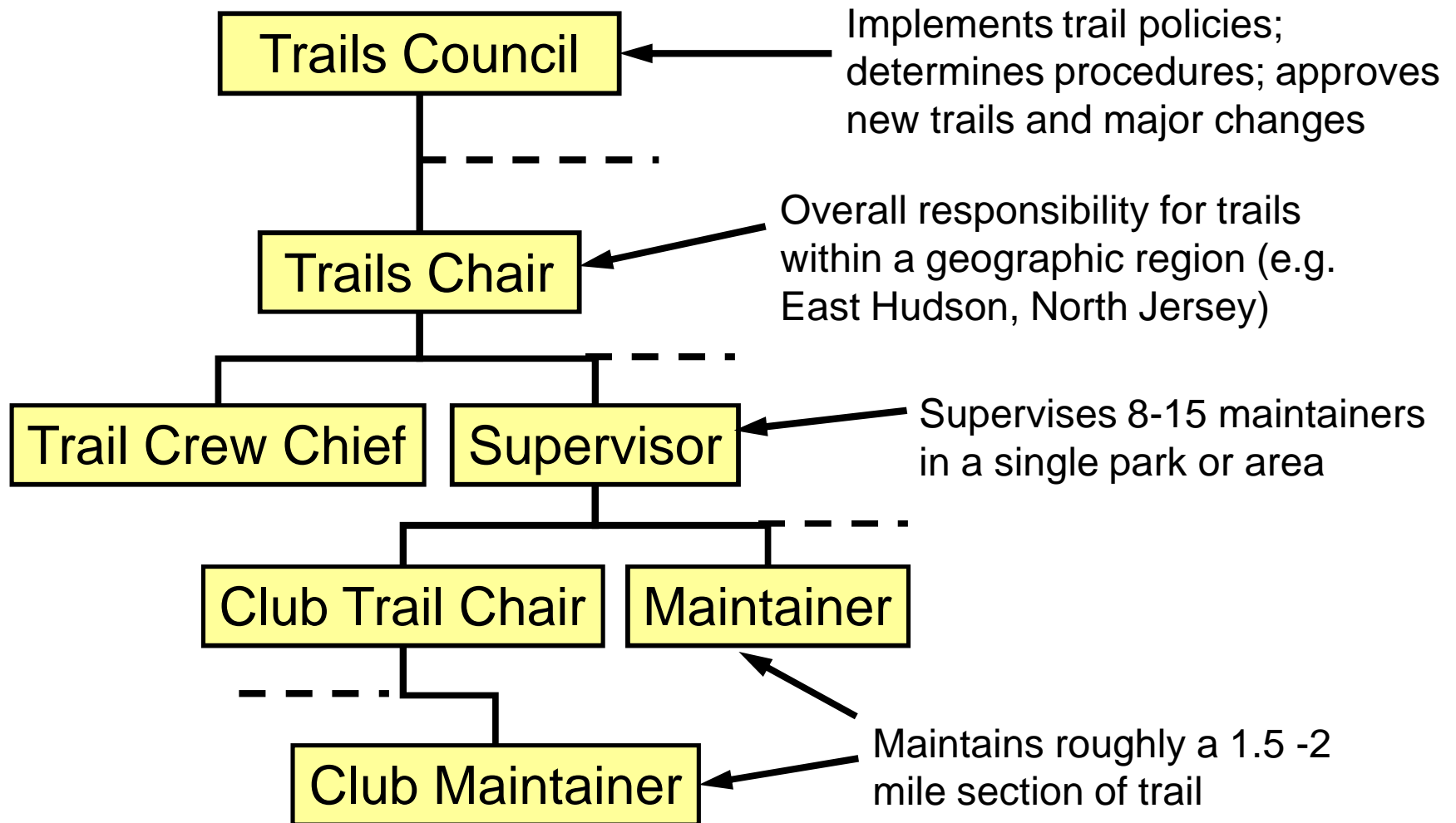
Miles Maintained



Ways trails are added

- Need for new trail in park (initiated by supervisor or trails chair)
- Personal contact – either volunteer or park manager asks
- Long distance trail project

Trail Organization Structure



Trail Volunteers

- Maintainer – takes care of trail
- Supervisor – takes care of maintainers and the reported problems
- Crew chiefs – resolves on-the-ground trail problems with trail crew
- Trails chairs –
 - Develop relationships with partners
 - Direct trail repair projects to crew chief
 - Work with supervisors as necessary

Maintainer

- Keeps trail clear of brush
- Maintains blazes
- Works on trail at least two times/year
- Submits semi annual reports
- Reports problems to supervisor
- Works on own schedule

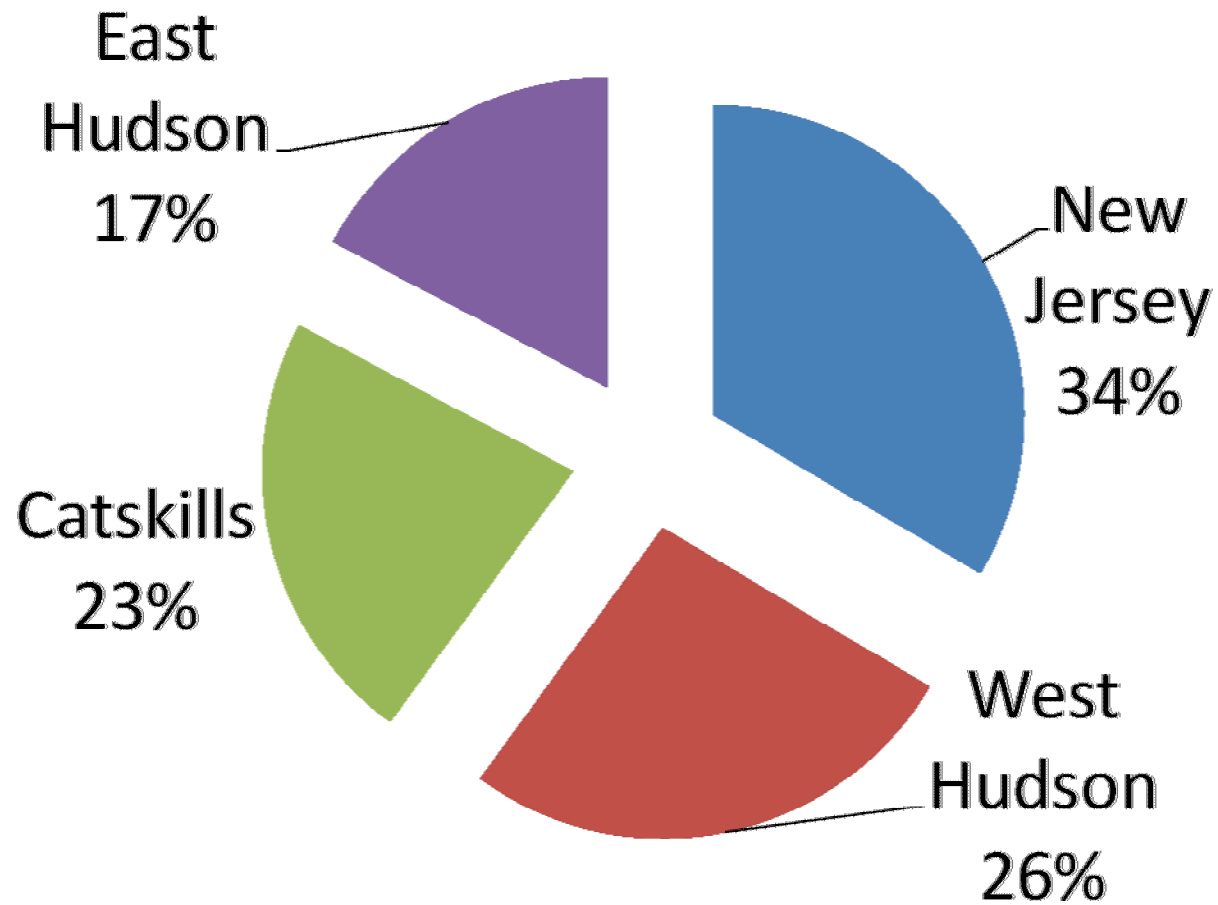
Trail Crew

- Fix on-the-ground problems
- Scheduled trips
- Work as group with crew leader
- Experienced crew members sometimes become crew leaders

Trail Crew Organization

- One area – West Jersey
- Shared across areas – North Jersey and North Central
- Pick up from management – AT Dutchess Putnam
- Specialty
 - Roving – Jolly Rovers
 - Bridges in Fahnestock

Location of Trails by Region



Board of Directors

Executive Director

East Hudson
Program
Coordinator

West Hudson
Program
Coordinator

Catskills
Program
Coordinator

New Jersey
Program
Coordinator

4 Trails Chairs
308 miles of trails

4 Trails Chairs
475 miles of trails

3 Trails Chairs
408 miles of trails

6 Trails Chairs
599 miles of trails

Program Coordinators

- Oversee trail program within assigned region
- Identify recruitment, training, and resource needs
- Work with volunteer leaders to implement and support trail projects
- Facilitate cooperation among staff, agencies, and volunteers

Community Trail Program

- Works on specific projects in municipalities and with nonprofits
- Empowers residents to build trails in their community
- Coordinates relationships among
 - Property owners
 - Land managers
 - Agency officials
 - Trail volunteers

Training*

- Maintenance 101
- Monitoring
- Trail construction
- Trail design
- Chain saw certification
- Stone work

* Now known as Trail University

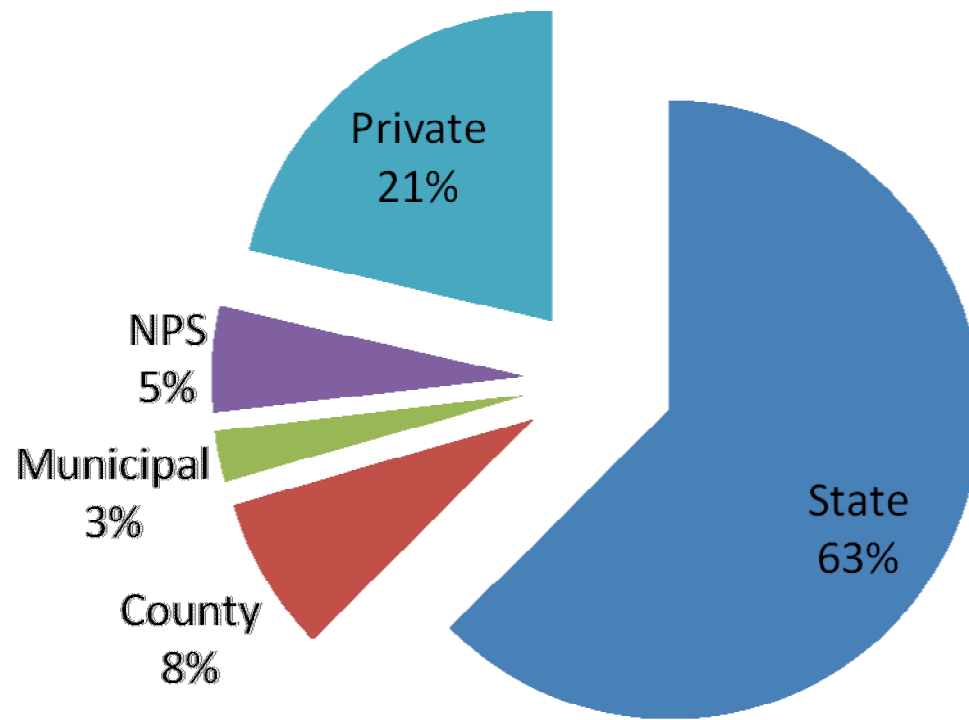
Maintenance 101

- Began about 1984 as an annual event
- Successful recruitment tool – try before buy
- Done regionally several times during year
- To see what is covered to train our maintainers: <http://nynjtc.org/group/trails-council/trail-management> and click on Maintenance 101 Slide Presentation

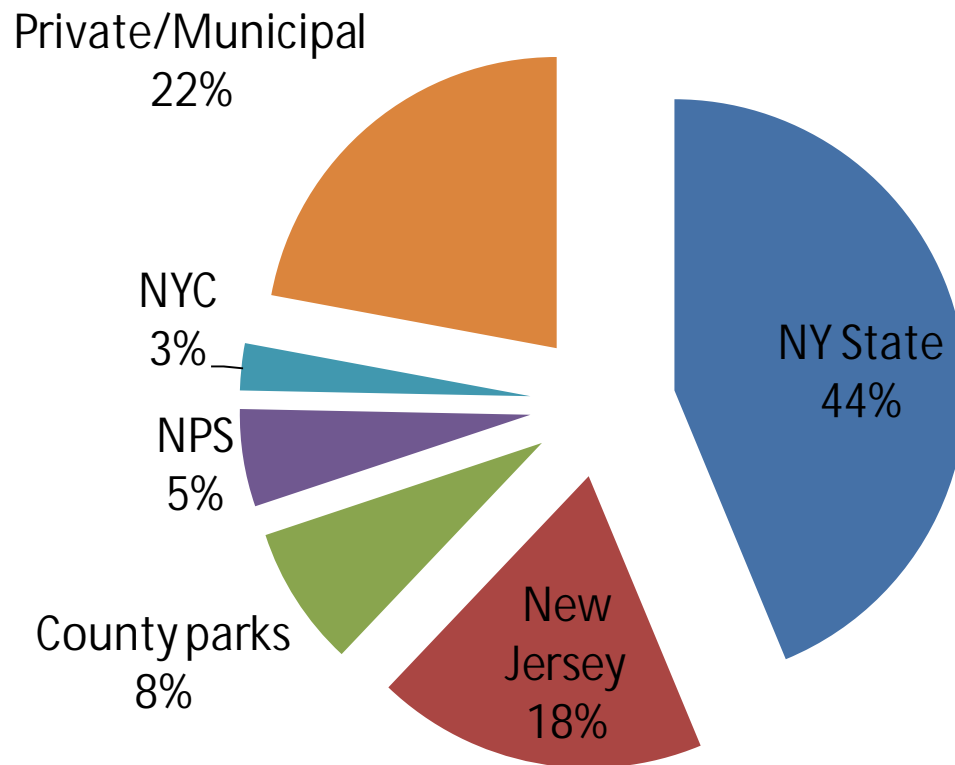
Reports

- Collected semi annually – hours worked and projects completed
- Keeps trail managers informed
- Helps partners know about the service provided
- Can be used as matches for grants

Trail Land Ownership



Trail Land Ownership



Memorandum of Understanding (MOU)

- Landowners (i.e. Long Path)
- State for Appalachian Trail
- Parks – state, county, town
- Appalachian Trail Conservancy
- Catskills

Moving forward

- What will the relationship be to the newly formed Friends groups in NY State Parks?
- How can we maintain the quality of our maintained trails?
- Should we expand geographically or via partnerships and if so where and with who?

Questions